

# Resource Kit for Tikanga Practices

Ngaroma M. Williams with Mary-Elizabeth Broadley



### **Authors**

Ngaroma Williams and Mary-Elizabeth Broadley

### **Publishers:**



Ako Aotearoa National Centre for Tertiary Teaching Excellence  
PO Box 756  
Wellington 6140

This resource is part of a larger project that was supported through the Ako Aotearoa National Project Fund 2009, in the Māori Initiative Projects funding stream.

[www.ako.aotearoa.ac.nz/kaupapa-maori-early-childhood](http://www.ako.aotearoa.ac.nz/kaupapa-maori-early-childhood)

### **Published:**

March 2012

### **Design and layout:**

Fitzbeck Creative

ISBN: 978-927202-05-0 (print)

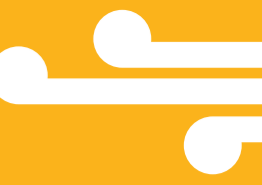
ISBN: 978-927202-04-3 (online)



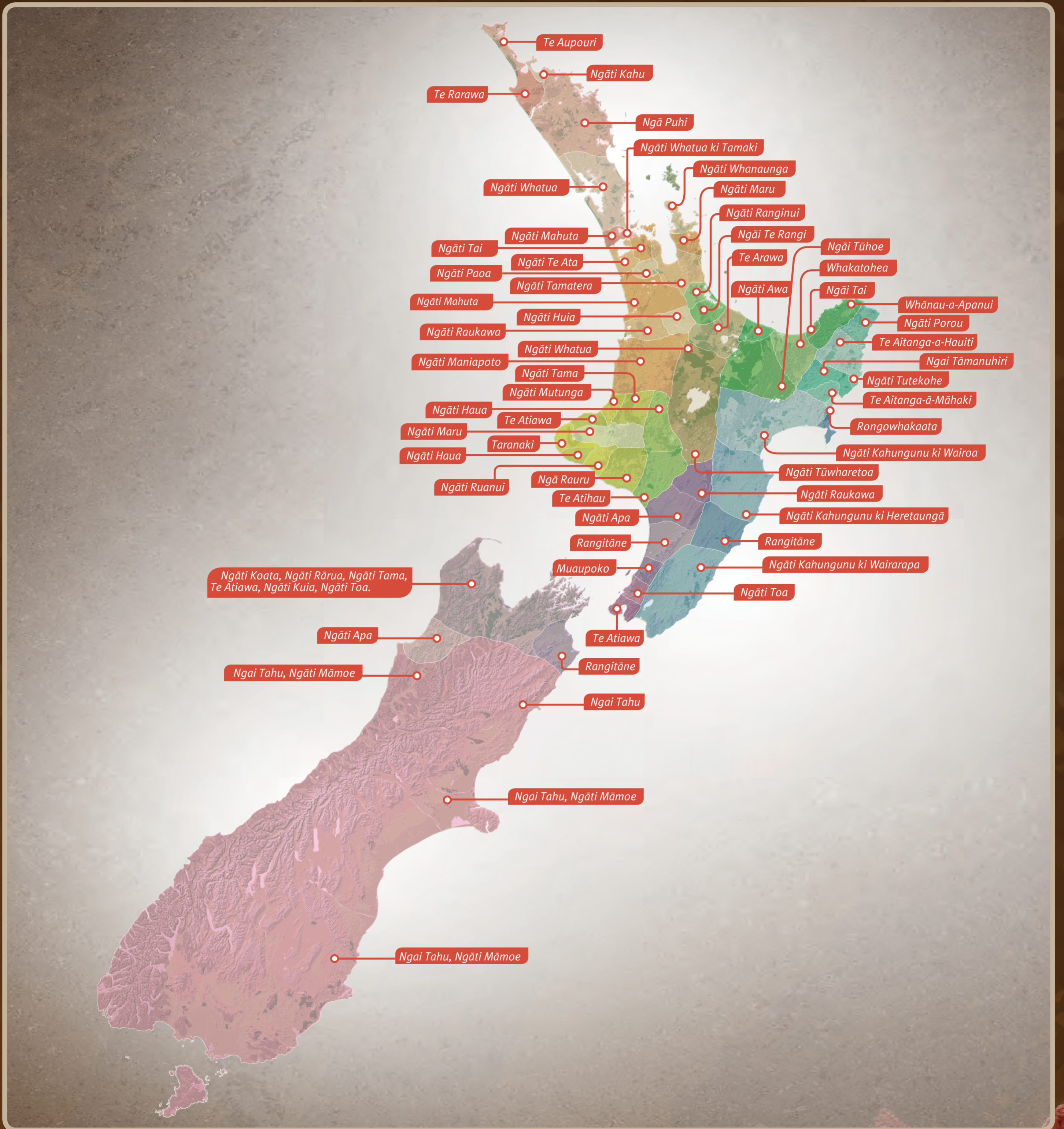
This work is published under the [Creative Commons 3.0 New Zealand Attribution Non-commercial Share Alike Licence \(BY-NC-SA\)](https://creativecommons.org/licenses/by-nc-sa/3.0/). Under this licence you are free to copy, distribute, display and perform the work as well as to remix, tweak, and build upon this work non-commercially, as long as you credit the author/s and license your new creations under the identical terms.



# Ngā Mana Whenua o Aotearoa



Do you know your local iwi?



**Please note:**  
Boundaries are still being determined. Therefore, within hapū boundaries there are often further smaller hapū.

Developed by  
**Open Polytechnic**  
KURATINI TUWHERA

Supported by  
**AKO**  
AOTEAROA  
NATIONAL CENTRE FOR  
TERTIARY TEACHING  
EXCELLENCE

Redeveloped from <http://wikipedia.org/wiki/file:iwiMap.png>. Developed for the Kaupapa Māori in Early Childhood Education project by Ngaroma Williams with Mary-Elizabeth Broadley.  
Available at: [www.ako.aotearoa.ac.nz/kaupapa-maori-early-childhood](http://www.ako.aotearoa.ac.nz/kaupapa-maori-early-childhood)

