

Ako Aotearoa Central Regional Forum

17 May 2024 | Palmerston North



Tūhono: Connecting Traditions and
Futures in Tertiary Learning

Nā āheitanga ā-mātauranga,
ko angitū ā-ākonga
Building educational capability
for learner success

Ako
AOTEAROA

Welcome

Tihei mauri ora!

Haere mai te manuhiri, haere mai

Haere mai te manuhiri, haere mai

Nō runga te manuhiri, nō raro te manuhiri

Nō te uru te manuhiri, nō te rāwhiti te manuhiri

Hei hā!

Haere mai rā ki runga ki te papa o Awapuni

Ki te iwi o Ngāti Rangitāne me ōna kārangaranga hapū

Haere mai rā ki tēnei hui whakawhitiwhiti mātauranga ā Ako Aotearoa

Tangihia hoki rā ngā mate o te wā

Tihei mauri mate, tihei mauri ora!

On behalf of Ako Aotearoa, we are delighted to welcome you to the 2024 Southern Regional Forum. After the success of our first 2024 Regional Forum in Ōtepoti, Dunedin in March, we are excited to continue our discussions this time around in Papaioea, Palmerston North.

The purpose of the 2023 Forums was to reconnect people across the tertiary sector after long periods of lockdowns and isolation due to Covid-19. We were delighted to hear how attendees appreciated this opportunity to reconnect and explore promising possibilities and new ideas together to support regional and local activities. We hope to inspire the same reconnection and collaboration in our 2024 Forums.

The 2024 theme - Tūhono: Connecting Traditions and Futures in Tertiary Learning – was developed from three key areas which are at the heart of Ako Aotearoa's mahi:

- **Cultivating excellent tertiary teaching** through teaching methodologies, pedagogical approaches and assessment strategies that are innovative and inclusive. This results in a vibrant learning environment that uses cutting edge technology suitable for today's learners.
- **Making links between teaching and learner success (Ōritetanga)** by placing success of learners at the heart. We must consider their cultural, emotional, and academic needs to give them a sense of belonging and empowerment.
- **Embracing Te Tiriti o Waitangi** by embedding Māori perspectives, language and values in curricula and campus activities. This means that tradition and innovation are balanced, and collaboration with Māori communities means that indigenous knowledge is incorporated.

Thank you once again for joining us today. We hope you find inspiration, learn something new, and make meaningful connections throughout the day.

Nāku noa, nā,



Helen Lomax
Tumuaki | Director



Sam Kelly
Central Hub Sector
Services Manager

Programme

Note: This programme is subject to change

Time	Action
8.30	Registration, Tea/Coffee
9.00	Professor Meihana Durie , Massey University Welcome from Ngāti Rangitāne kaikōrero
9.05	Dr Joe Te Rito & Dr Mei Winitana , Ako Aotearoa Mihi Whakatau with karakia and waiata
9.10	Dr Joe Te Rito & Dr Mei Winitana , Ako Aotearoa Ako Aotearoa's Mātauranga Māori Programmes
9.30	Mike Styles , Dyslexia and Neurodiversity Consultant The ever-evolving world of dyslexia/neurodiversity: Strategies for learners and educators
10.05	Associate Professor Kate Schick , Victoria University of Wellington Modern Pedagogical Approaches – Creating Supportive Learning Environments through Micro Communities
10.40	Morning Tea – Te Paramanawa o te Ata
11.00	Dr Cherie Chu-Fuluifaga , Victoria University of Wellington Phenomenal Educators – The Kato Toolkit
11.35	Helen Lomax , Ako Aotearoa; Associate Professor Meegan Hall , Ako Aotearoa Board Co-Chair Ako Aotearoa priorities for 2023-2026
12.30	Lunch – Tina
1.20	Graeme Read , Ako Aotearoa Ako Update – Manako
1.40	Dr Marvin Wu & Dr Janet McHardy , Ako Aotearoa Ako Update – Ako Aotearoa Research and Innovation Agenda (AARIA)
2.05	Michael Few , Education Consultant AI – Opportunities for Assessment
2.45	Afternoon Tea – Te Paramanawa o te Ahiahi

Time	Action
3.05	Panel Discussion: Tertiary Sector Emerging Themes - Coalition Government first 100 days <ul style="list-style-type: none">• Dr Maggie Hartnett – Massey University• Hannah Pia Baral – ACE Aotearoa• Wayne Dyer – ITENZ
3.50	Te Ataahia Hurihanganui , Reo Rua Ltd Mātauranga Māori
4.25	Pale Sauni , Ako Aotearoa Closing remarks
4.30	Dr Joe Te Rito , Ako Aotearoa Karakia Whakamutunga

Central Regional Forum presenters



Professor Meihana Durie

Meihana speaks on a range of kaupapa that relate to Māori Futures and Māori Potential and was a recent panellist at this year's Hui aa Motu, hosted by the Kīngitanga. Much of Meihana's work centres around projects that harness Māori potential through multidimensional approaches that help to promote transformative outcomes for Māori.

Meihana has a background in Māori Educational Leadership, Māori Wellbeing, Te Reo Māori and Tikanga Māori and is Deputy Vice Chancellor Māori at Massey University. He carries a number of leadership roles for his iwi of Ngāti Kauwhata and Rangitāne and is a kaikōrero for his various marae and an iwi media spokesperson. He is the Chair of the MANUKURA Board of Trustees, a Ngāti Tahuriwakanui Māori High Performance Secondary School based in Palmerston North and some of his other current roles and appointments include: Pou Tikanga, Waitangi Tribunal Constitutional Inquiry; Pou Tikanga, Te Kura Kaupapa Māori o Mana Tamariki; Chair, Aorangi Marae Trustees and Chair, Te Mata o Te Tau, Academy for Māori Research and Scholarship, Massey University. Meihana is a past recipient of the Sir Peter Snell Doctoral Award in Public Health and Exercise Science and the HRC Hohua Tutengaehe Māori Postdoctoral Fellowship Award, and alumni of Massey University, Te Wānanga o Raukawa and the Whakatupuranga Rua Mano Tribal Experiment.



Dr Joe Te Rito

Dr Joe Te Rito is Kaihautū Mātauranga Māori (Deputy Director Māori) at Ako Aotearoa. His lifelong commitment to Māori language revitalisation, research, and community engagement has left a legacy in New Zealand's educational landscape. Prior to his current role at Ako Aotearoa, Joe held the position of Kaihautū Tikanga (Senior Research Fellow – Tikanga and Reo) at Ngā Pae o te Māramatanga until December 2015. In this role, he provided guidance in tikanga Māori (Māori customs and protocols), te reo Māori (Māori language), and community/iwi relationships.

He headed Māori Studies at EIT for 17 years where his commitment to language preservation led him to become the founder and current Chair of Radio Kahungunu, a Māori radio station that has been broadcasting since 1988. Dr. Te Rito was part of the original group that took the Māori Language Petition to Parliament in 1972.

Presentation abstract

Dr Joe Te Rito will open the forum with a karakia, waiata and a mihi; then talk briefly about the Mātauranga Māori programme noting relevant updates as a result of our new TEC contract.



Dr Mei Winitana

Kia ora tātou katoa! He uri ahau i ngā iwi katoa o te waka o Mataatua, Ngāti Ruapani ki Waikaremoana, me Taranaki Whānui ki Waiwhetu. Tihei mauriora!

Mei is Kaiwhakahaere/Manager Mātauranga Māori at Ako Aotearoa, with extensive experience in the adult education sector. As a researcher, a resource developer and an experienced workshop facilitator, she works in several collaborative projects focusing on literacy, numeracy, and cultural capability for tertiary practitioners and educators; co-designing of iwi/tribal training and education plans; cultural strategic planning with organisations, and development of a suite of online Māori cultural capability resources with digital badges.



Mike Styles

Mike Styles has worked in the areas of adult literacy and numeracy and dyslexia for over 20 years. Over the past 13 years he has specialised in dyslexia and related learning differences. Mike has led research projects into dyslexia in adults in New Zealand and has presented at conferences in the United Kingdom, Italy, and Australia.

Mike retired as a National Specialist – Literacy and Numeracy for Primary ITO and is a dyslexia practitioner and consultant (<https://www.dyslexia-consulting.com/>). He is an experienced adult educator and facilitator; and presents workshops and webinars that are interactive and informative.

Mike has also published a book about dyslexia titled 'Congratulations, you have dyslexia – Great minds think differently'.

Presentation abstract

The collective knowledge and understanding about dyslexia and related neurodiverse conditions have expanded enormously over the last two generations and continue to expand. This is the result of the expanded understanding of how the brain works and our increased knowledge of human genetics since the human genome was completely mapped.

The modern thinking is that the range of neurodiverse conditions are much more closely related and interconnected than we thought. This has given us pause to think about how best to meet the needs of the neurodiverse/dyslexic brain.

Science based understanding of how learning occurs has helped those with dyslexia/neurodiversity as well as neurotypical learners as well.

The session will cover off how modern thinking about Metacognition, the Universal Design for learning Principles, Executive Function, Learner Agency and Assistive technologies all contribute to improved outcomes for dyslexic/neurodiverse learners.



Associate Professor Kate Schick

Dr Kate Schick is Associate Professor in Political Science and International Relations at Te Herenga Waka | Victoria University of Wellington. Kate's quest is to shape the university into a place where everyone can flourish. Her desire to preserve communal small-group deep learning in large classes has led to her embracing relational pedagogy and creating 'micro-communities'.

Kate cultivates small student groups through ako (teaching and learning reciprocity) and whanaungatanga (relationships). The groups are connected as a community in a way that provides deeper learning for all, and supportive learning environments for Māori, Pacific, neurodiverse and remote learners.

Kate's approach has also had a significant impact on her colleagues who are "inspired and deeply thinking". Kate's excellent teaching practice has been published and recognised both nationally and internationally. In 2022, she was jointly awarded the British International Studies Association Award for Distinguished Excellence in Teaching International Studies. In 2023, she received a Te Whatu Kairangi Award in the 'Achieving Diversity and Inclusion' category.

Presentation abstract

In this interactive presentation I discuss an 'access move' I've embraced in recent years – creating 'micro-communities' within the larger classroom to preserve communal small-group deep learning. Micro-communities are a way of facilitating inclusive circles of community and care in our classrooms that allow diverse ākonga to learn relationally. They centre ako, the idea that we all learn from and teach one another, and whanaungatanga, the sense of community that we build by being together. In small groups of 6–8 ākonga, students come to better understand themselves and their world(s) through relational engagement as they embark on learning journeys with their peers. At the centre of this model is encounter: students encounter one another in their small groups and this relational context becomes one in which they encounter ideas. Over time, learners come to know and trust each other and become willing to explore new and potentially challenging concepts in their micro-communities. Students report being more comfortable expressing their ideas in these

smaller groups; they also report finding the diversity of lived experience and views expressed in their groups a meaningful part of their learning. This session gives us an opportunity to discuss these ideas and to reflect on how they might be applied in your teaching practice.



Dr Cherie Chu-Fuluifaga (PhD, MA, BA, BA/Hons)

Cherie, an impassioned activist academic, merges theory with action, advocating for change rooted in transformative practices. Her commitment to social justice is reflected in both her scholarly pursuits and hands-on initiatives, shaping a holistic approach to addressing systemic issues. With a profound belief in the power of education and activism, Cherie strives to create a meaningful impact by bridging the gap between theory and real-world transformation.

Presentation abstract

Join us for a transformative journey at the Phenomenal Educators Workshop, where innovation meets inspiration in the realm of education. This workshop aims to cultivate a community of educators dedicated to fostering exceptional learning experiences. Delve into cutting-edge pedagogical approaches, explore the nuances of student engagement, and unravel the secrets to creating an inclusive and empowering learning environment. Through interactive sessions, collaborative discussions, and real-world case studies, participants will gain practical insights into harnessing the power of technology, embracing diversity, and nurturing the next generation of forward-thinking leaders. Elevate your teaching practice, connect with like-minded educators, and embark on a path to redefine what it means to be a phenomenal educator.



Helen Lomax

Helen (Te Aitanga-a-Māhaki) is Director/Tumuaki of Ako Aotearoa, New Zealand's National Centre for Tertiary Teaching Excellence. Helen has been a judge for the Global Teaching Excellence Awards for Advance HE, United Kingdom. She has worked on projects for international quality peer review benchmarking with universities and institutes from New Zealand, Australia and Pacific countries including Samoa, Fiji, and Papua New Guinea. She is a member of the Australasian Standards Advisory Board for Advance HE which provides strategic advice to help meet the needs of members and partners across Australasia.

For the Tertiary Education Commission, Helen led programmes for priority learner groups, literacy and numeracy, and funding for centres of research excellence. Helen previously worked as a consultant for projects on Māori business development, developing human capabilities, industry learner reps, work-based learning, and women in trades.

Presentation abstract

Overview and update on Ako Aotearoa priorities for 2023–2026 under the consortium led by Massey University as Host and Te Pūkenga MIT/Unitec and Te Wānanga o Aotearoa.



Associate Professor Meegan Hall

Meegan (Ngāti Ranginui | Ngāi Te Rangi | Ngāti Tūwharetoa) is Assistant Vice-Chancellor (Mātauranga Māori) at Te Herenga Waka | Victoria University of Wellington where she provides strategic oversight and guidance around Māori learning, teaching and research, and management oversight of Māori student support and external Māori engagement. Her research focuses on Māori in higher education, which combines her interest in tertiary learning and teaching with her doctorate in Māori studies.

She is a member of Te Kāhui Amokura (Universities New Zealand), the Kāhui Ārahi of Ngā Pae o te Māramatanga, and the TLRI Advisory Board of the New Zealand Council for Educational Research, as well as a Principal Fellow and Australasian Strategic Advisory Board member of Advance HE. She is Co-Chair of the Ako Aotearoa National Centre for Tertiary Teaching Excellence Board.



Graeme Read

Graeme has been active in the tertiary education sector for over 18 years, including teaching roles from foundation through to degree levels, a Literacy and Numeracy Leader, and a Learning Technologies Administrator. Graeme leads Ako Aotearoa's Manako Programme, which is tasked with upskilling educators in the tertiary sector around language, literacy, numeracy, and cultural capability.

Graeme received his Masters' Degree in Adult Literacy and Numeracy Education from the Auckland University of Technology in 2016.

Graeme is also the convenor for the Ako Aotearoa Neurodiversity Community of Practice, which was formed in 2020, and currently has close to 500 members. The community is free to join and open to anyone that has a role or interest in neurodiversity.

Presentation abstract

Graeme will provide an update of the projects that are currently underway for the Ako Aotearoa Manako Programme.

This includes the In the Starting Blocks project, which examines the challenges faced by adult learners with dyscalculia in daily activities and their work environment, and the Scoping the Integration of AI in Adult Tertiary Education project, which investigates how Artificial Intelligence be effectively and equitably integrated into adult tertiary education in Aotearoa New Zealand.



Dr Marvin Wu

Marvin oversees the Research and Innovation portfolio of Ako Aotearoa (AARIA), to ensure the effective strategic planning, decision making, and management of research projects, and contribute to team leadership and stakeholder relationship management (commenced May 2023). Since the successful launch of the AARIA Commissioning Funding Round in September 2023 with six new research projects being funded, Marvin and his team are working to implement the AARIA Contestable Funding Round in March 2024, with a preliminary budget of \$250,000.

Previously, Marvin held several roles with University of Auckland, including Research Programme Manager (Liggins Institute), Senior Research Programme Coordinator (Faculty of Medical and Health Science), Research Programme Coordinator (Faculty of Arts), with a strong background in research and portfolio management.

Presentation abstract

In this presentation, Marvin provides key information about AARIA (Ako Aotearoa Research and Innovation Agenda) Fund: the highlighted research projects and funding requirements.



Dr Janet McHardy

Dr Janet McHardy is an experienced literacy practitioner and researcher having worked in various contexts in both Australia and Aotearoa New Zealand over many years. Although a generalist in her practice, much of Janet's research has been around less-skilled readers and how best to build reading skills. She currently works in the work-based learning environment as an advisor with BCITO and is focused on how to support and enhance the learning journey of apprentices.

Presentation abstract

As the representative of AARIA researchers, Janet discusses her experience with the AARIA Fund in 2022-23 from the initial planning, application, and acceptance of the proposal, through the research phase of the project to the submission and acceptance of the final report.

The project sought to explore the online learning experiences of BCITO apprentices, in particular unpacking the enablers and barriers to effective online engagement. Our goal was to increase knowledge in this under-researched field in vocational education and training in Aotearoa New Zealand and with this knowledge to build understanding of how we could better support apprentices in the digital environment.

Apprentices were surveyed and interviewed to gain insights into impact of factors which may enhance or disadvantage them as online learners. An interconnected relationship between enablers and barriers emerged informing recommendations as to how BCITO can work in the future to enhance online experiences of apprentices.



Michael Few

Michael is a Learning Advisor with a focus on research, development, and the implementation of contemporary change initiatives in the teaching / assessment space for a government agency. This includes the coordination and creation of supporting systems to embed change initiatives.

During Michael's thirty-plus-year teaching career, he has been fortunate to work in a variety of settings in the tertiary sector. These included: working as a Programme Leader and teaching on the Certificate in Adult Teaching (Advanced) Level 5 qualification in the ITP sector; being Lead Coach for an initiative to improve the success for adult Māori learners (based on Professor Russell Bishop's Te Kotahitanga - Effective Teaching Profile); working in a range of programmes within the School of Business, School of Computing and Information Systems; School of Design and School of Continued Education; Programmes at a PTE; and developing and delivering a range of Assessment Workshops for Ako Aotearoa over the last ten years.

Michael has also worked on the development and auditing of quality management systems for training establishments and regional government.

Michael's interests and expertise include professional teacher development in the areas of culturally responsive pedagogy, assessment and the application of technology in teaching. He enjoys working as a mentor and coach to other teaching colleagues.

Presentation abstract

The education landscape is at a turning point. AI is an opportunity to bring innovation into assessment practices. This workshop will explore AI trends, tools and strategies to aid assessment.



Associate Professor Maggie Hartnett

Associate Professor Maggie Hartnett is the Director of the Teaching Academy responsible for academic staff teaching professional development at Massey University. She is a Senior Fellow of AdvanceHE and has worked in the tertiary education sector for over 20 years holding academic positions at the Western Institute of Technology (WITT), Waikato Institute of Technology (Wintec) and Massey University.

She is a member of Ascilite (Australasian Society for Computer in Learning in Tertiary Education) and HERSDA (Higher Education Research Development Society of Australasia). Her research interests include motivation, and engagement in digital environments, technology-enabled learning, digital inclusion, and emerging educational technologies. She has served as an executive board member for the Flexible

Learning Association of New Zealand (FLANZ) and as Associate Editor for the Journal of Open, Flexible and Distance Learning (JoFDL).



Hannah Pia Baral

Hannah is the CEO of ACE Aotearoa. She was born in the Philippines and immigrated to New Zealand with her family in the late 80's. Since earning a BA in English and Politics and an MA in Politics from the University of Auckland, her career path has seen her take on a variety of leadership roles in the health and education sectors in both New Zealand and Australia. During her 14 years in Australia she also earned her MBA from the University of Newcastle, and held volunteer roles with a number LGBTIQA+ organisations, including a board position and expert advisory roles.

Hannah has a wealth of adult education sector experience. Along with other past roles at ACE Aotearoa, she has completed ASPBAE's Basic Leadership Development Course (BLDC) and maintained connections with ASPBAE for over a decade.

Hannah has gained recognition for her exceptional skills in transforming and modernising organisations, spearheading strategic change, successfully collaborating with government agencies and funders, and growing strong workplace cultures. It is with great excitement that she returns to New Zealand and ACE Aotearoa, to continue supporting a sector she is very passionate about.



Wayne Dyer

Wayne is the Chief Executive of ITENZ, a peak body association which represents PTEs. In his role he works closely with providers, government agencies, and entities such as Ako Aotearoa.

Wayne has been involved with tertiary and international education for 30 years. He started as an English language teacher working in Spain, Turkey, the UK, Australia and New Zealand and has since had roles as a teacher, teacher trainer, course book writer, Director of Studies, Associate Head of School, and Principal.

His experience includes both public and private sector. In addition to working in PTEs, he has held academic management positions at RMIT University in Australia and Unitec in Auckland. He has also worked as an EER evaluator with NZQA. Wayne lives in Auckland.



Te Ataahia Hurihanganui

Te Ataahia Hurihanganui of Ngāti Kahungunu ki Wairarapa, Rangitāne, Ngāti Ira, Ngāti Porou and Te Arawa descent is a multilingual Māmā and Teacher based in her hometown of Whakaoriori, Wairarapa. Her professional background is in education and curriculum design/development, and she has been teaching languages, including Te Reo Māori to adults, both locally and abroad, for the past 11 years.

She is known by her colleagues in the tertiary education space as Taahia – leading and facilitating Māori Language and Culture workshops for ACE Aotearoa since 2019. Outside of work, Taahia dedicates her time to her family and community; especially enjoying beautiful, loving moments with her husband and two children. She has passions for travel, different cultures, good food, and anything creative!

Presentation abstract

This will be a short and interactive session exploring how mātauranga can be valued, used, discussed, and engaged with in various ways within today's tertiary learning environments. Participants will have the opportunity to share and discover practical ideas that connect the indigenous Māori traditions of these lands, with all cultures and learners.

Ako Aotearoa

The National Centre for Tertiary Teaching Excellence



E tautoko ana i te hapori

Ko wai tātou

Who we are

All our services aim to improve the way people deliver high-quality teaching and learning. That's because we want to bring about lasting change in the tertiary education sector to enhance learner success. Effective networks and strong relationships are important to us and how we work together to achieve this.

Ako Aotearoa holds a unique position in the tertiary education sector. We provide advocacy and leadership on all aspects of teaching theory and practice. Our goal is to encourage and enable excellent educators to support the growth of capable and skilled learners who can contribute to our communities and society.

We support educators, teams and organisations to frame all that they do around the success of their learners, including in workplaces, universities, wānanga, institutes of technology and polytechnics (Te Pūkenga), independent tertiary enterprises, and in adult and community education.

Ko ā tātou mahi

What we do

Te Akoranga Ngaio | Professional Learning and Development

Delivering high-quality, relevant, evidence-based professional learning solutions is an important part of what we do.

We contribute to the growth of skilled, culturally capable educators, managers and support staff.

Every year we run a wide range of professional learning and development programmes throughout New Zealand. They focus on topic and skill areas relevant to educators working in a wide range of tertiary contexts.

These workshops and courses are available online, face-to-face and/or in-house. Visit ako.ac.nz/professional-learning to view our full public schedule.

Te Whatu Kairangi | Aotearoa Tertiary Educator Awards

Te Whatu Kairangi (previously the national Tertiary teaching Excellence Awards) celebrates outstanding educators and trainers across the entire tertiary education sector who are making a difference to learners, their whānau and communities.

Recent changes include the introduction of Le Moana Mua, the new Pacific award, and a revitalised Groups criteria in 2023, plus the new Te Tohu Reo Māori Award for te reo Māori educators in 2024.

Visit ako.ac.nz/te-whatu-kairangi to learn more, including how to enter, dollar amount of awardee grants, and past recipients. The Prime Minister's Educator of the Year Award, along with an additional \$10,000, is granted to the awardee whose portfolio best exemplifies the overall criteria.

Ko te Rangahau me te Auaha | Research and Innovation programme

Our new approach is guided by the Ako Aotearoa Research and Innovation Agenda (AARIA), with a strong emphasis on innovation and collaboration with the tertiary sector. The programme focuses more closely with objectives two and three of the current Tertiary Education Strategy and aims to:

- support the tertiary education system and contribute to better tertiary teaching and subsequently better learning outcomes for ākonga/learners
- share research and innovation findings in ways that support teaching and learning/education and training, as well as supporting the interests of any collaborating organisations or entities
- provide opportunities for collaborative work and networking that benefits all involved and contributes to building research capability.

Pūtahi Mātauranga | Knowledge Centre

Our website-based Knowledge Centre has over 1500 free resources available to those working in tertiary education, vocational and workplace training. This wide range of practical resources support staff to build teaching and learning practice to benefit learners.

The evidence-based tools, guides, videos and other outputs are developed from our research, projects and other initiatives. We encourage people to download from ako.ac.nz/knowledge-centre and share widely.

Our Manako programme

Ako Aotearoa's Manako team focuses on building educator capability to enhance cultural capability and Language, Literacy and Numeracy (LLN) success for all learners. 'Manako' means "aspiration" and "hope" in te ao Māori.

Some key components to the Manako programme include the Dyslexia-Friendly Quality Mark and the Tapatoru Ako Professional Practice Award. The programme also involves high-quality professional learning and development courses and workshops, online educator pathways hosted on Pathways Awarua plus leading work on learner agency and digital literacy.

Huihuinga Tāngata | Strategic forums and sector events

We are proud to run strategic events in priority areas of tertiary education in Aotearoa. These events include the Regional Forums hosted by our Northern, Central and Southern Hubs, and Tuia Te Ako (our national Māori tertiary education hui). We also collaborate, sponsor and contribute to a range of sector events organised by other groups.

Find us on:

 facebook.com/AkoAotearoa  linkedin.com/company/ako-aotearoa  instagram.com/akoaotearoa

Connect with us

Sam Kelly

Sector Services Manager
for Central region

M: 021 241 2670
E: samuel.kelly@ako.ac.nz

With over 25 years spent working in the education sector, Sam has become an experienced manager, teacher, and facilitator. He is committed to helping individuals and teams to develop their self-awareness, interpersonal skills, and sense of purpose they need for greater impact, efficiency, and performance.



Te Pātaka Mātauranga Māori | Storehouse of Māori Knowledge

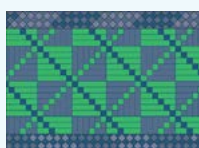
Since June 2022, our Pātaka or storehouse has been making it easier for visitors to our website to find content relating to Mātauranga Māori, Kaupapa Māori, success for Māori learners and building cultural capability. Visit ako.ac.nz/te-pataka-matauranga-maori and explore the Pātaka's four kete:



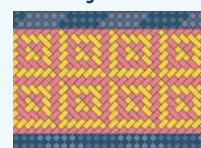
Te Kete Rauemi Mātauranga
Kete of Māori Resources



Te Kete Āheitanga Ahurea Māori
Kete of Cultural Capability
Pathways



Te Kete Hāpai Akoako
Kete of Professional
Learning and Development



Te Kete Huihuinga Tāngata
Kete of Events

Communities of Practice

We facilitate two online communities of practice (CoP): our Manako CoP is for educators in the adult language, literacy and numeracy space. You are welcome to join at facebook.com/groups/alnacc and participate in the discussions. Our Neurodiversity CoP is for anyone with expertise or interest in neurodiversity. Contact Graeme at Graeme.Read@ako.ac.nz if you'd like to join. We are pleased to support the development of other CoPs in the tertiary sector, whether it be within your own organisation or across institutions.



Tūhono: Connecting Traditions and Futures in Tertiary Learning

Nā āheitanga ā-mātauranga,
ko angitū ā-ākonga
Building educational capability
for learner success

Ako
AOTEAROA